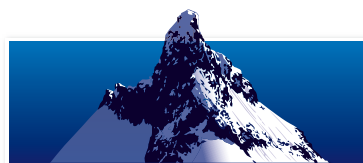


VERSION 1 – JULY 22, 2013



# ANTARCTIC AIR-CRUISES

2 0 1 4 - 1 5 S E A S O N



**ANTARCTICA XXI**  
THE FIRST AIR CRUISE TO ANTARCTICA

# ANTARCTIC AIR-CRUISES

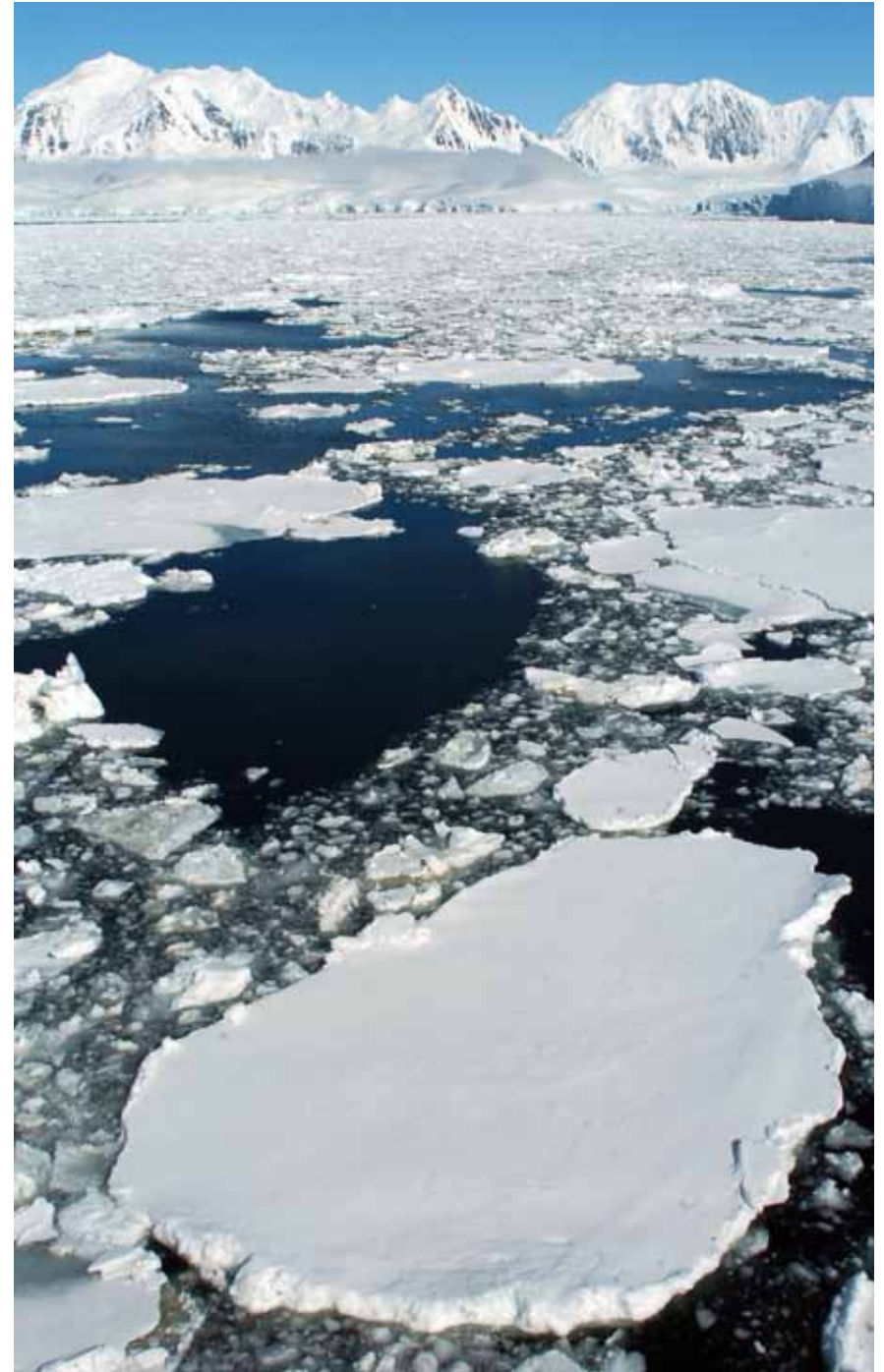
2 0 1 4 - 1 5 S E A S O N

TRAVEL PROGRAMS	3
SHIP	6
AIRPLANE	7
RATES	8
IMPORTANT INFORMATION	9
OPTIONAL PUNTA ARENAS EXTENSION	11
OPTIONAL ADVENTURE ACTIVITIES	13
CONTINGENCY PLAN	17
USEFUL TIPS	20
TERMS & CONDITIONS	21

**Fly** the  
& **Drake**  
**Cruise**  
Antarctica  
*Experience only the best part!*



**ANTARCTICA XXI**  
THE FIRST AIR CRUISE TO ANTARCTICA



# ANTARCTICA EXPRESS AIR-CRUISE

USHUAIA + ANTARCTICA + PUNTA ARENAS



**Fly** the  
**&** Drake  
**Cruise**  
Antarctica  
*Experience only the best part!*

## TRAVEL PROGRAM

Leaving from Ushuaia, ANTARCTICA XXI takes you through the Beagle Channel and to legendary Cape Horn. Cross the mythical waters of the Drake Passage and explore one of the most spectacular places on earth, the coldest, highest, windiest, driest, and remotest continent - Antarctica.

- DAY 1** Your journey begins in Ushuaia, Argentina. Board Ocean Nova and sail along the Beagle Channel towards Puerto Williams, Chile, the southernmost town in the world. Explore the surroundings before setting sail to Cape Horn.  
**N.B.:** Due to port operations, boarding in Ushuaia is exclusively between 15:00 hr and 16:00 hr. At 16:00 hr. boarding will close. Please be on time. Keep your passport at hand and allow enough time to clear port security and to reach the vessel.
- DAY 2** After an overnight crossing of Nassau Bay, you awake in full view of legendary Cape Horn! Weather permitting, board a Zodiac and be one of the few privileged adventurers to step foot on this famous and rarely visited island. Back on board, set sail towards Antarctica and cross the famous passage named in honour of Sir Francis Drake, the great 16th century British explorer.
- DAY 3** As you sail through the Drake Passage en route to King George Island, in the South Shetland Islands, attend an engaging program of lectures and presentations. In the company of expert guides, watch for wildlife from the glass-enclosed lounge or from the outside decks. You may spot magnificent sea birds, such as albatrosses and petrels, as well as different species of whales on their way south to Antarctica.
- DAY 4** After crossing the Antarctic Convergence, the environment changes noticeably. Keep your camera ready, as this is the time to watch for the first icebergs and the first sight of Antarctic land. Reaching the South Shetland Islands, sail in ice-filled bays, while enjoying the company of sea birds, penguins, seals and whales. Board a Zodiac for your first memorable shore visit to a penguin colony. Taking advantage of the endless Antarctic daylight, exploration will continue well into the evening.
- DAY 5** Upon reaching King George Island, disembark at Fildes Bay and explore the area, such as the Chilean Base Frei and the Russian Base Bellingshausen. Bid farewell to Antarctica before boarding the flight back to Punta Arenas, Chile. The program ends upon arrival at the airport in Punta Arenas.  
**N.B.:** Transfer to the city will be available for passengers staying overnight in Punta Arenas. One complimentary hotel night in Punta Arenas is offered upon request on Day 5 of the Travel Program.





# CLASSIC ANTARCTICA AIR-CRUISE

PUNTA ARENAS + ANTARCTICA + PUNTA ARENAS



## TRAVEL PROGRAM

Jumping over Cape Horn and the mythical waters of the Drake Passage, ANTARCTICA XXI takes you to one of the most spectacular places on earth, the coldest, highest, windiest, driest, and remotest continent - Antarctica.

**Fly** the  
**& Drake**  
**Cruise**  
Antarctica  
*Experience only the best part!*

- DAY 1** Arrive in Punta Arenas, Chile, where you are welcomed by ANTARCTICA XXI staff and transferred to your hotel. In the afternoon, you attend a briefing that provides important information about your voyage and reviews the essential guidelines for Antarctic visitors. Later, gather for a welcome dinner and meet your fellow adventurers while enjoying a typical regional menu.  
**N.B.:** Passengers should plan to be in Punta Arenas at 15:00 hours, at the latest. Pick-up at the Punta Arenas airport and transfer to the hotel cannot be guaranteed for travellers arriving later than 15:00 hours.
- DAY 2** Your Antarctic adventure begins with a two-hour flight from Punta Arenas to King George Island, in the South Shetland Islands. As you exit the airplane, the clear Antarctic air fills your lungs for the first time. Explore the area surrounding Chile's Frei Station and Russia's Bellingshausen station, before boarding a Zodiac to embark your expedition vessel
- DAY 3 TO 6** Cruise between the South Shetland Islands and the western coast of the Antarctic Peninsula, sailing along ice-filled fjords and among spectacular icebergs, while enjoying the company of sea birds, penguins, seals and whales. Each day, disembark by Zodiac and explore the landscape together with expert polar guides. On board the ship, attend an engaging program of lectures and presentations, and enjoy spectacular vistas from the glass-enclosed lounge while sharing your daily adventures with fellow guests.  
No journey is the same as flexibility is the key to success in Antarctica. The Expedition Team sets the voyage route to take advantage of the ever-changing opportunities provided by Nature, crafting a unique and extraordinary experience each time. While the exact itinerary changes with each expedition, you will explore several spots that offer the best possible overview of the varied Antarctic environment. Your voyage may include visits to sites such as Paulet Island, Hope Bay, Port Lockroy, Petermann Island, Paradise Bay, Deception Island, the Lemaire Channel, or many other magnificent places.
- DAY 7** Return to King George Island and bid farewell to Antarctica before boarding the flight back to Punta Arenas. The program ends upon arrival at the airport in Punta Arenas.  
**N.B.:** Transfer to the city will be available for passengers staying overnight in Punta Arenas. One complimentary hotel night in Punta Arenas is offered upon request on Day 7 of the Travel Program.



# POLAR CIRCLE AIR-CRUISE

PUNTA ARENAS + ANTARCTICA + PUNTA ARENAS



## TRAVEL PROGRAM

Jumping over Cape Horn and the mythical waters of the Drake Passage, ANTARCTICA XXI takes you to one of the most spectacular and remotest places on earth - Antarctica. Sail to the far south, and be on of the few adventurous travellers to cross the Antarctic Circle.

**Fly** the  
**& Drake**  
**Cruise**  
Antarctica  
*Experience only the best part!*

- DAY 1** ANTARCTICA XXI staff welcomes you in Punta Arenas, Chile. Transfer to your hotel and attend a briefing that provides important information about your voyage and reviews the essential guidelines for Antarctic visitors. A welcome dinner introduces you to the local gastronomy as you meet fellow adventurers from around the world.  
**N.B.:** Passengers should plan to be in Punta Arenas at 15:00 hours, at the latest.  
Pick-up at the Punta Arenas airport and transfer to the hotel cannot be guaranteed for travellers arriving later than 15:00 hours.
- DAY 2** A smooth two-hour flight takes you efficiently from Punta Arenas to King George Island, in the South Shetland Islands. Your Antarctic adventure begins as you exit the airplane and the clear Antarctic air fills your lungs for the first time. Explore the area surrounding Chile's Frei Station and Russia's Bellingshausen station, before boarding a Zodiac to embark your expedition vessel.
- DAYS 3 TO 8** Sail along ice-filled fjords and among spectacular icebergs, while enjoying the company of sea birds, penguins, seals and whales. Visit the South Shetland Islands and the western coast of the Antarctic Peninsula, disembarking by Zodiac each day. In small groups, hike to extraordinary sites and take part in exploratory Zodiac excursions to otherwise inaccessible areas. Expert polar guides share their passion for Antarctica through an engaging program of illustrated presentations, and lead you ashore to interpret the wildlife, the history and the many wonders of the Antarctic environment. From the glass-enclosed lounge, enjoy spectacular views while sharing your daily adventures with fellow guests over a drink.  
The goal of the expedition is to sail far south in the attempt of reaching the Polar Circle. The Expedition Team sets the specific voyage route based on local conditions, and takes advantage of the ever-changing opportunities provided by Nature. Flexibility will be the key to a successful voyage. Your expedition may include visits to sites such as Port Lockroy, Petermann Island, Paradise Bay, the Lemaire Channel, Prospect Point or other magnificent places. Each voyage is unique and each is crafted to provide the best possible overview of the varied Antarctic environment.
- DAY 9** Back at King George Island, bid farewell to Antarctica as you board the flight to Punta Arenas. The program ends upon arrival at the airport in Punta Arenas.  
**N.B.:** Transfer to the city will be available for passengers staying overnight in Punta Arenas. One complimentary hotel night in Punta Arenas is offered upon request on Day 9 of the Travel Program.

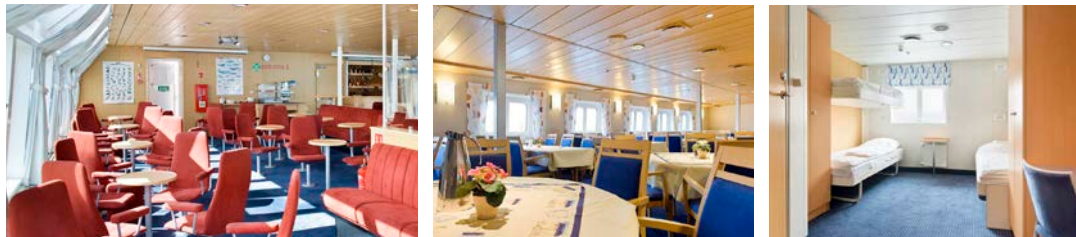




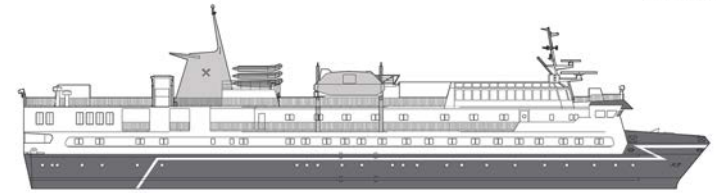
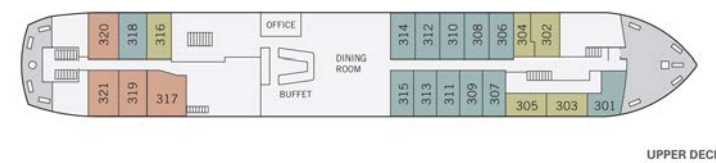
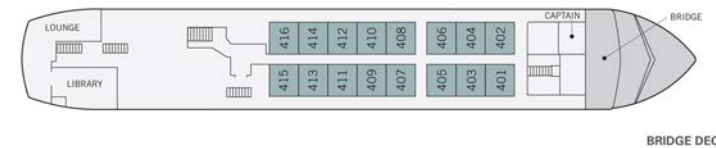
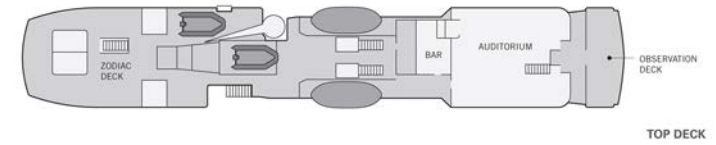
# VESSEL OCEAN NOVA

Ocean Nova is a modern and comfortable vessel. She was built in Denmark in 1992 to sail the ice-choked waters of Greenland. She was fully refurbished in 2006 and has since benefitted from annual upgrades and improvements. Her ice-strengthened hull is ideally suited for expedition travel in Antarctica. Ocean Nova has capacity for 68 passengers accommodated in comfortable outside cabins, all with private facilities, including dedicated single, twin and triple cabins.

In addition to a glass-enclosed observation lounge and presentation room, she also has a spacious dining room, a bar, a library, a small gym, and an infirmary. The ship has Zodiac boats that are well suited for disembarking and wildlife watching.



## SHIP AND AIRPLANE



- TRIPLE CABINS
- TWIN CABINS
- DEDICATED SINGLE CABINS

EXPEDITION STAFF & CREW:	38
PASSENGERS:	68
LIFEBOATS:	2, fully enclosed, capacity of 90
LENGTH:	73.0 m
BREADTH:	11.0 m
DRAFT:	3.7 m
PROPULSION:	Diesel engines - 2,000-horsepower
ICE CLASS:	1B, EO (Hull Ice 1A)
CRUISING SPEED:	12 knots in open water

# AIRPLANE BAE-146

The aircraft BAE-146 was manufactured in the United Kingdom by British Aerospace (which later became part of BAE Systems). It is a high-wing aircraft with very short runway requirements, which make it particularly suited for this kind of destinations. It is operated by Aerovias DAP, which has more than 20 years of experience flying in Patagonia and Antarctica.

MODEL: BAE 146-200  
ENGINES: 4 turbofans Honeywell ALF 502R-5  
LENGTH: 93 ft 8 in (28,55 m)  
WINGSPAN: 86 ft 5 in (26,34 m)  
CRUISE SPEED: 465 mph (750 km/h)  
SERVICE CEILING: 31,200 ft (9,500 m)  
CAPACITY: 70 passengers



**ANTARCTICA XXI**  
THE FIRST AIR CRUISE TO ANTARCTICA

# DATES & RATES

## ANTARCTICA EXPRESS AIR-CRUISE 5 DAYS / 4 NIGHTS

TRIP CODE	START AND END DATES	TRIPLE CABIN	TWIN CABIN	SINGLE CABIN
<b>AE1</b>	29 NOV - 03 DEC 2014	3,995	4,995	6,895
<b>AE2</b>	14 JAN - 18 JAN 2015	3,995	4,995	6,895

## CLASSIC ANTARCTICA AIR-CRUISE 7 DAYS / 6 NIGHTS

TRIP CODE	START AND END DATES	TRIPLE CABIN	TWIN CABIN	SINGLE CABIN
<b>CA1</b>	02 DEC - 08 DEC 2014	9,795	10,895	14,995
<b>CA2</b>	07 DEC - 13 DEC 2014	9,795	10,895	14,995
<b>CA3</b>	12 DEC - 18 DEC 2014	9,795	10,895	14,995
<b>CA4</b>	17 DEC - 23 DEC 2014	9,795	10,895	14,995
<b>CA5</b>	22 DEC - 28 DEC 2014	11,495	12,995	18,595
<b>CA6</b>	27 DEC - 02 JAN 2015	11,495	12,995	18,595
<b>CA7</b>	17 JAN - 23 JAN 2015	10,595	11,995	16,895
<b>CA8</b>	22 JAN - 28 JAN 2015	10,595	11,995	16,895
<b>CA9</b>	27 JAN - 02 FEB 2015	10,595	11,995	16,895
<b>CA10</b>	01 FEB - 07 FEB 2015	10,595	11,995	16,895
<b>CA11</b>	06 FEB - 12 FEB 2015	10,595	11,995	16,895
<b>CA12</b>	11 FEB - 17 FEB 2015	10,595	11,995	16,895

## POLAR CIRCLE AIR-CRUISE 9 DAYS / 8 NIGHTS

TRIP CODE	START AND END DATES	TRIPLE CABIN	TWIN CABIN	SINGLE CABIN
<b>PC1</b>	01 JAN- 09 JAN 2015	12,995	14,795	20,795
<b>PC2</b>	16 FEB - 24 FEB 2015	12,995	14,795	20,795



**Note** Rates are per voyage and per person in US dollars.

**Booking conditions** A Booking Fee of USD 2,000 per person is required to book a cabin, except for ANTARCTICA EXPRESS Air-Cruises, where the Booking Fee is USD 1,000 per person. The balance is due in full 120 days prior to departure. Payments can be made by wire transfer or by major credit card. Payments by credit card are subject to a 2.5% fee (however, the 2.5% fee is not charged on the Booking Fee.)

**Children** Children are admitted from the age of 8 years if accompanied by a fully responsible adult. A 5% discount on the rate per person is offered for children up to 12 years of age.

**Single travellers** Single travellers can choose between:

- Booking a dedicated single cabin. No supplement is applied for single use of dedicated single cabins.
- Booking a twin cabin for single use. An 85% supplement should be added to the rate per person in twin cabin.
- Sharing a twin cabin with another passenger (male or female). No supplement is applied, and ANTARCTICA XXI will take care of finding the matching companion.

**N.B.:** In case of sharing the cabin with another passenger, this also implies sharing any other hotel accommodation foreseen in the Travel Program of each voyage.



# IMPORTANT INFORMATION

## INCLUDED IN THE RATE

- Transfers airport/hotel/airport in Punta Arenas foreseen on the first and last day of the voyage (in case of using the complimentary hotel night upon return from Antarctica, no transfer is included the following day).
- 1 overnight in Punta Arenas at a four star hotel and a welcome dinner including drinks on Day 1 (except ANTARCTICA EXPRESS Air-Cruise).
- 1 complimentary hotel night upon request in Punta Arenas on the day of return from Antarctica.
- Flight from Punta Arenas to Frei Station on King George Island and/or vice versa as indicated in the program corresponding to each voyage.
- Ship cruise along the Antarctic Peninsula as indicated in the program corresponding to each voyage.
- Daily buffet breakfast and lunch offering a wide choice of dishes
- Daily served dinner offering a choice of three main courses
- A selection of wines, beers, and soft drinks served with lunch, dinner, and at the bar
- Coffee, tea, chocolate, cappuccino, water and snacks throughout the expedition
- All guided shore excursions.
- Lectures and entertainment on board.
- Comprehensive pre- and post-voyage information material.
- Loan of waterproof boots for landing in Antarctica.
- Contingency Plan for air-cruise departures as foreseen for each voyage (see further on).

## NOT INCLUDED IN THE RATE

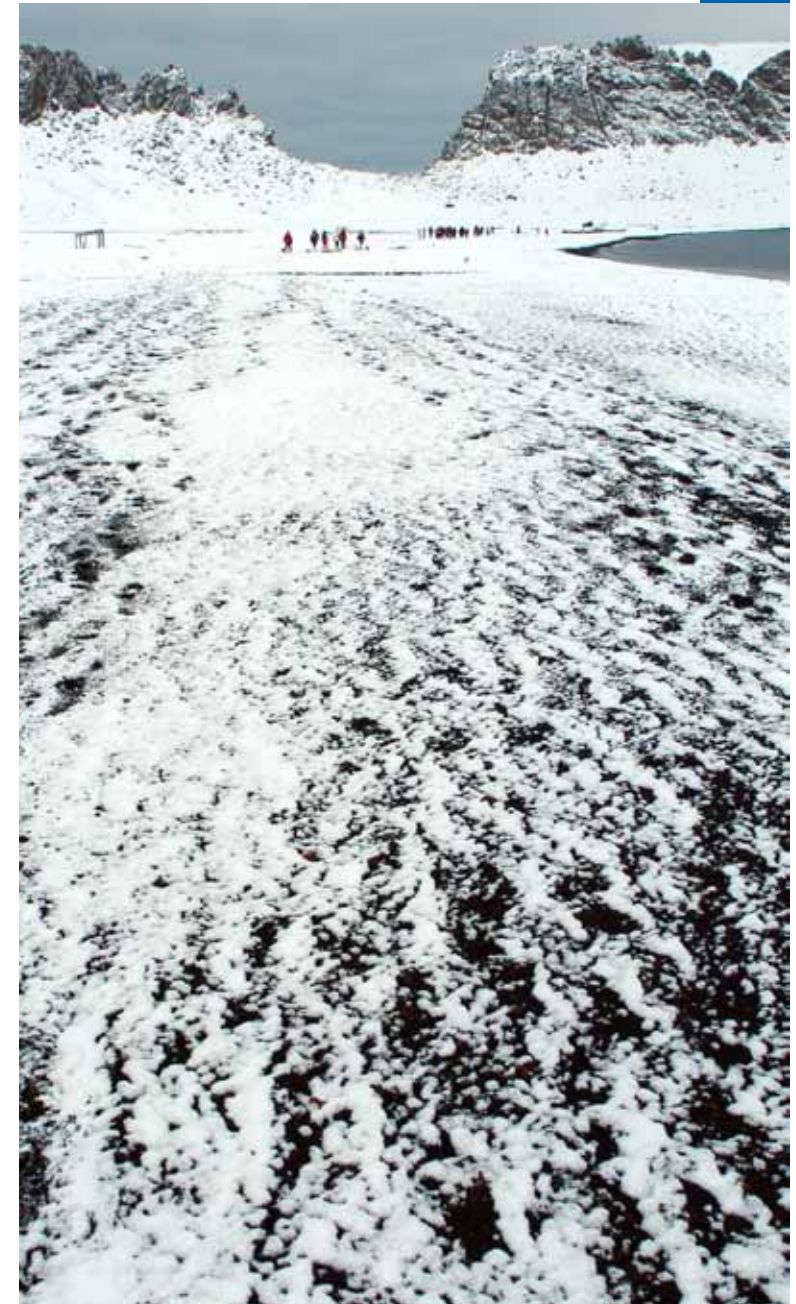
- Accommodation, meals, excursions and transfers other than those included in the Travel Program and the Contingency Plan corresponding to each voyage.
- Personal insurance.
- Extra expenses (communication, laundry, souvenirs, etc.).
- Tips (suggested USD 10 per person per day).
- Visas or Passport expenses and/or any other arrival and/or departure tax, if applicable.

## EXPEDITION LANGUAGE

English.

## BAGGAGE ALLOWANCE

The maximum weight allowed on the flights to and from Antarctica is 20 kg per passenger, including hand luggage. Exceeding luggage will be kept in custody by ANTARCTICA XXI and will be returned to passengers upon their return from Antarctica at Punta Arenas airport.



# IMPORTANT INFORMATION

## MEDICAL INSURANCE

ANTARCTICA XXI requires participants to be adequately covered by a medical insurance, including aero-medical evacuation from Antarctica.

## CANCELLATION INSURANCE

ANTARCTICA XXI strongly urges participants to be adequately covered by cancellation insurance.

## PARTICIPATION FORM

Passengers are required to fill and sign an on-line Participation Form, and to return it to ANTARCTICA XXI duly filled at least 120 days prior to departure (see [www.mytrip-xxi.com](http://www.mytrip-xxi.com)).

## ITINERARY

Every effort will be made to adhere to the planned program. However, it must be realized that with this type of adventurous travel to Antarctica, changes to the itinerary may occur due to severe and unpredictable weather. We need to emphasize the fact that weather conditions are unpredictable and that safety is always the paramount concern on any Antarctic voyage. For this reason ANTARCTICA XXI reserves the right to change the itinerary here described due to weather conditions or other factors beyond ANTARCTICA XXI's control without consulting the participants.

## FLIGHT CONNECTIONS

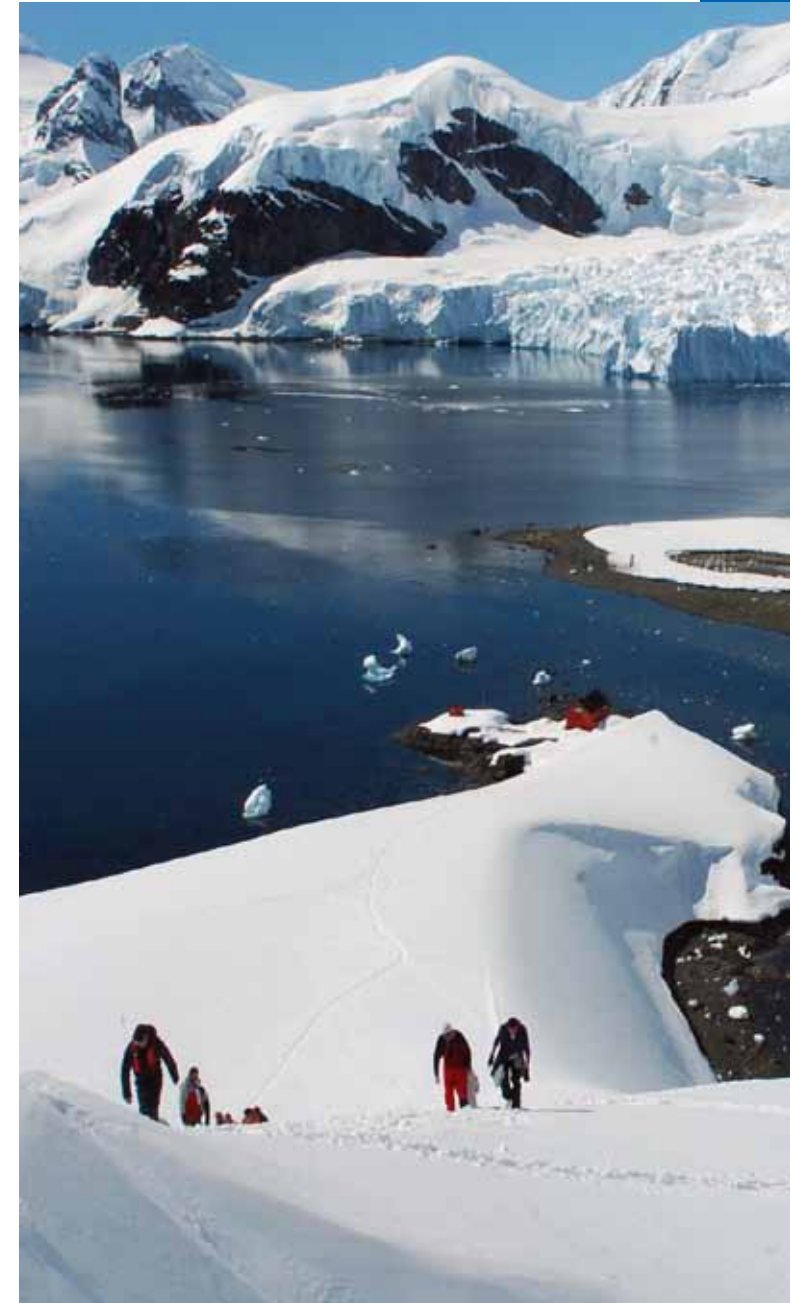
A tight time-schedule connection with an Antarctic expedition is unwise. For this reason, ANTARCTICA XXI strongly suggests that a flexible air ticket be held for your journey home, and in any case not to book a flight on the same day of the return flight from Antarctica.

## CONTINGENCY PLAN

In case that the flight to or from Antarctica cannot take place due to unfavourable weather conditions either at point of origin and/or destination, ANTARCTICA XXI will apply the Contingency Plan corresponding to each voyage.



**ANTARCTICA XXI**  
THE FIRST AIR CRUISE TO ANTARCTICA



# STRAIT OF MAGELLAN WILDLIFE EXPERIENCE

## OPTIONAL EXTENSION PUNTA ARENAS

11

### WHAT?

Sail the Strait of Magellan to Magdalena and Marta Islands, home to large populations of Magellanic penguins and sea lions, and many unique seabirds such as Magellanic and imperial cormorants, black-browed albatross, southern giant petrels, South-American terns, skuas, Austral seagulls, and Antarctic pigeons.

### WHEN?

After returning to Punta Arenas following your Antarctic Air-Cruise. Available in conjunction with all Air-Cruise departures.

### WHY?

Take advantage of your trip to the deep south of Chile! See more of picturesque Patagonia while adding another penguin species to your list. At the same time, gain peace of mind in case unfavourable weather delays your return flight from Antarctica. The time buffer means that your onward flight connections should not be impacted.

### ITINERARY

**DAY 1** Arrive to Punta Arenas following your return flight from Antarctica. This corresponds to Day 7 of our Classic Antarctica Air-Cruise, Day 9 of the Polar Circle Air-Cruise and Day 5 of the Antarctica Express Air-Cruise. Transfer to the group hotel and overnight.

**DAY 2** Our day starts early in the morning with breakfast at the hotel and a transfer to the shores of the Strait of Magellan. Here you board a semi-covered motorboat and start the 35-minute navigation towards Magdalena and Marta Islands. The islands are home to a unique ecosystem that is protected as a nature reserve called Los Pingüinos. It is a must stop for visitors to southern Chile.

On Magdalena Island you disembark and experience one of the largest colonies of Magellan Penguins in South America. During the one-hour visit you see over 150,000 penguins and explore the island on foot. More than 1,000 sea lions call Marta Island home. To limit the impact on Marta Island's fragile environment, we will not disembark. Instead, you will observe and photograph the wildlife from the sea, while circumnavigating the island. During the navigation you will have good chances of spotting Austral and Tunina dolphins, a thrilling experience, in addition to a large variety of seabirds that inhabit those southern latitudes such as Magellanic and imperial cormorants, black-browed albatross, southern giant petrels, South-American terns, and Austral seagulls. Return to Punta Arenas is by lunchtime. The total duration of the excursion will be approximately four and a half hours. The afternoon is at your leisure so you can explore Punta Arenas. The city is full of interesting sites connected to the history of Antarctic exploration. We provide a handy guidebook and map so you can experience the cultural, historical, and natural heritage of Southern Patagonia through a self-guided walking tour. Overnight is at the group hotel.

**DAY 3** Following breakfast, check out and transfer to the Punta Arenas airport.



**ANTARCTICA XXI**  
THE FIRST AIR CRUISE TO ANTARCTICA



# STRAIT OF MAGELLAN WILDLIFE EXPERIENCE

## PRICES & CONDITIONS *(Prices are per person)*

Single occupancy:	USD 255
Double occupancy:	USD 225
Triple occupancy:	USD 210

### Included services:

- 2 hotel nights at a four star hotel, including breakfast
- Transfers airport/hotel/airport on Day 1 and Day 3 with Spanish-speaking driver
- Excursion as indicated in the program starting and ending at the hotel
- Entrance fee to the Nature Reserve "Los Pinguinos"
- Snack during the excursion
- Punta Arenas reference guidebook with map

### Services specifically not included:

- Lunch and dinner
- Personal expenses
- Gratuities

## PAYMENT POLICY

Payment is due with final balance of the Antarctic Air-Cruise (120 days prior departure).

## CANCELLATION POLICY

If the return flight from Antarctica is delayed, and the program or some of its elements are missed, no refund will be extended. The transfer of services to a different date is not possible.

The travel program may vary depending on weather conditions. The Captain of the motorboat and the maritime authorities can, at any time, cancel the boat excursion if navigation conditions are not suitable. In that case, an alternative excursion will be offered.

## SUGGESTIONS

Since the motorboat is semi-covered, we recommend the following clothing and accessories:

- Warm clothes and waterproof outerwear
- Hat, scarf and gloves
- Comfortable trekking shoes or boots
- Small backpack with sealable bags to keep personal items dry
- Sunglasses with UV protection
- Sunscreen

## OPTIONAL EXTENSION PUNTA ARENAS 12



**ANTARCTICA XXI**  
THE FIRST AIR CRUISE TO ANTARCTICA

# SEA KAYAKING IN ANTARCTICA

OPTIONAL ADVENTURE ACTIVITY

13

## THE PROGRAM

The sea kayaking program offered by ANTARCTICA XXI is a group experience limited to a maximum of 10 participants under the guidance/leadership/responsibility of an experienced Kayak Master. The group will meet on board at the beginning of the expedition for a briefing session and an overview of the equipment. The group will then paddle together for the duration of the expedition. The sea kayaking program is only offered on a group basis. You will not be able to leave the ship on independent excursions, and only participants who are part of the group from the start of the program can take part in the activity. Should you wish to skip an excursion, you are welcome to do so. However your assigned equipment and place in the group cannot be used by another person.

Every day you are in Antarctica, your Kayak Master will work with the Expedition Team to look for the best kayaking opportunities within the trip's schedule, based on suitable and safe weather conditions. The group will be led by the Kayak Master and will be supported by a dedicated safety Zodiac. Each kayaking excursion will be approximately one and a half hours in duration. At the end of the excursion the Kayak Master will strive to offer the group approximately 30 minutes at the landing site so you can participate in the regular activities with the rest of the group on shore. Your flexibility will be required, as the local conditions will determine the exact unfolding of the activity. For example, in some cases the kayaking excursion or the time on land may be shorter or longer. In some cases, kayaking may not be possible at all. Safety will always be the paramount consideration for any decision concerning kayaking, as well as any other activity conducted in Antarctica.

To take part in the kayaking program **you must have previous kayaking experience.** You don't need to be a top kayaking expert but you must have experience in using a sea kayak with a spray skirt. You must also have experience with an emergency wet exit. For your safety, the Kayak Master may ask you to perform a trial to test your skills. To take part in the kayaking program you must be able to communicate in English, and you must listen to and follow the instructions of the Kayak Master. If you do not understand the instructions, you must inform the Kayak Master right away. For any reason whatsoever, the Kayak Master can deny or interrupt your participation in the kayaking program. If your participation in the program is denied, ANTARCTICA XXI will refund the money you paid for the activity without further obligation to you. Minimum age for participation is 16 years.



**ANTARCTICA XXI**  
THE FIRST AIR CRUISE TO ANTARCTICA

# SEA KAYAKING IN ANTARCTICA

## OPTIONAL ADVENTURE ACTIVITY

14

### THE EQUIPMENT

Sea kayaking in Antarctica requires specialized equipment. As part of the program, ANTARCTICA XXI will provide you with the following equipment:

- Double/Single kayak (\*) with spray skirt and an adjustable paddle
- Dry suit, booties, pogies, thermal hat, and dry bag.
- Life vest and other safety items

*(\*) The kayak will be assigned by the Kayak Master based on a number of factors, including skill level and availability.*

### PREPARING FOR THE PROGRAM

When you confirm your participation in the kayaking program you must state any existing medical condition, illness, or poor state of health. Your state of health should then be stated again on board the ship prior to taking part in the kayaking program. Before starting your expedition, you must visit a doctor for a medical check-up to ensure that you are fit to participate in the kayaking program. It will be our assumption that you have done so and that you will be advised against participation in the kayaking program should there be any health concerns.

If you have limited kayaking experience, you will benefit from taking a course prior to joining the program. If possible, take this course in a location where you can experience kayaking in cold weather.

### DATES, PRICES, AND CONDITIONS

The per-person participation price is USD 895.

The Sea-Kayaking option is available on all Classic Antarctica Air-Cruises and all Polar Circle Air-Cruises.

Payment of the participation fee is due at time of reservation. In case of cancellation 120 days or more prior to departure, ANTARCTICA XXI will refund 50% of the participation fee. In case of cancellation 119 days or less prior to departure, there will be no refund.



**ANTARCTICA XXI**  
THE FIRST AIR CRUISE TO ANTARCTICA



# SNOWSHOEING IN ANTARCTICA

OPTIONAL ADVENTURE ACTIVITY

15

## THE PROGRAM

The snowshoeing program offered by ANTARCTICA XXI is a group experience limited to a maximum of 12 participants. The group will meet on board with the Snowshoeing Guide at the beginning of the expedition for a briefing session and an overview of the equipment. The group will then snowshoe together for the duration of the expedition. The snowshoeing program is only offered on a group basis. You will not be able to leave the ship on independent excursions, and only participants who are part of the group from the start of the program can take part in the activity. Should you wish to skip an excursion, you are welcome to do so. However, your assigned equipment and place in the group cannot be used by another traveller.

Every day you are in Antarctica your Snowshoeing Guide will work with the Expedition Leader to look for the best snowshoeing opportunities within the trip's schedule, based on suitable and safe weather conditions. The group will be led by the Snowshoeing Guide and may be supported by a second staff member. Each snowshoeing excursion will be approximately one and a half hours in duration. Your flexibility will be required, as the local conditions will determine the exact unfolding of the activity. For example, in some cases the snowshoeing excursion may be shorter or longer. In some cases, snowshoeing may not be possible at all.

To take part in the snowshoeing program **you do not need previous experience**. However, snowshoeing can be a strenuous activity so your level of physical fitness should be good. For your safety, the Snowshoeing Guide may ask you to perform a trial to test your fitness level. To take part in the snowshoeing program you must be able to communicate in English, and you must listen to and follow the instructions of the Snowshoeing Guide. If you do not understand the instructions, you must inform the Snowshoeing Guide right away. For any reason whatsoever, the Snowshoeing Guide can deny or interrupt your participation in the snowshoeing program. If your participation in the program is denied, ANTARCTICA XXI will refund the money you paid for the activity without further obligation to you. Minimum age for participation is 16 years.



**ANTARCTICA XXI**  
THE FIRST AIR CRUISE TO ANTARCTICA

# SNOWSHOEING IN ANTARCTICA

## OPTIONAL ADVENTURE ACTIVITY

16

### THE EQUIPMENT

Snowshoeing in Antarctica requires specialized equipment. As part of the program, ANTARCTICA XXI will provide you with the following equipment:

- A pair of snowshoes that can be fitted over your expedition boots
- Walking poles to aid you in your excursion

### PREPARING FOR THE PROGRAM

When you confirm your participation in the snowshoeing program you must state any existing medical condition, illness, or poor state of health. Your state of health should then be stated again on board the ship prior to taking part in the snowshoeing program. Before starting your expedition, you must visit a doctor for a medical check-up to ensure that you are fit to participate in the snowshoeing program. It will be our assumption that you have done so and that you will be advised against participation in the snowshoeing program should there be any health concerns.

### DATES, PRICES, AND CONDITIONS

The per-person participation price is USD 195.

The Snowshoeing option is available on the following expeditions:

Classic Antarctica Air-Cruise CA1 : 02 DEC – 08 DEC 2014  
Classic Antarctica Air-Cruise CA2 : 07 DEC – 13 DEC 2014  
Classic Antarctica Air-Cruise CA3 : 12 DEC – 18 DEC 2014  
Classic Antarctica Air-Cruise CA4 : 17 DEC – 23 DEC 2014  
Classic Antarctica Air-Cruise CA5 : 22 DEC – 28 DEC 2014  
Classic Antarctica Air-Cruise CA6 : 27 DEC – 02 JAN 2015

Polar Circle Air-Cruise PC1 : 01 JAN - 09 JAN 2015

Payment of the participation fee is due at time of reservation. In case of cancellation 120 days or more prior to departure, ANTARCTICA XXI will refund 50% of the participation fee. In case of cancellation 119 days or less prior to departure, there will be no refund.



**ANTARCTICA XXI**  
THE FIRST AIR CRUISE TO ANTARCTICA

# CONTINGENCY PLAN

ANTARCTICA XXI carries out Antarctic air-cruises since 2003. The experience of these years has allowed developing a profound knowledge of the delicate coordination between the air and the sea operation in an extreme environment as Antarctica.

In the unlikely event that the flight to Antarctica cannot take place due to unfavourable conditions either at point of origin and/or destination, ANTARCTICA XXI has established a Contingency Plan, applying from Day 2 of the Travel Program corresponding to each voyage.

## CONTINGENCY PLAN FOR ANTARCTICA EXPRESS AIR-CRUISES

In case of a delay on the return flight to Punta Arenas from Antarctica, passengers on board the ship will continue cruising to nearby places until the return flight to Punta Arenas is authorized. Full board and all excursions are included. No refunding for whatever reason is foreseen.

## CONTINGENCY PLAN FOR CLASSIC ANTARCTICA AIR-CRUISES

From Day 2 to Day 6 every effort will be made to transport passengers to Antarctica taking into consideration their safety and the safety of the aircraft. In case such efforts are not successful, the daily program described hereby will apply:

- DAY 2** Guided tours to sites of historic and wildlife interest in Punta Arenas. Meals are included as well as accommodation in the same hotel as foreseen on Day 1 of the Travel Program.
- DAY 3** Guided tours to sites of historic and wildlife interest in Punta Arenas. Meals are included as well as accommodation in the same hotel as foreseen on Day 1 of the Travel Program.
- DAY 4** Accommodation with breakfast in a 3-star hotel in Punta Arenas is included. Any other service and meal are excluded. Passengers are required to stand-by for announcements concerning the flight to Antarctica. **N.B.:** If by the end of Day 4 (24:00 hours local time) ANTARCTICA XXI will not be able to transport passengers to Antarctica, ANTARCTICA XXI will refund to each passenger 5% of the total rate (excluding discounts, if any) paid for the voyage.
- DAY 5** Accommodation with breakfast in a 3-star hotel in Punta Arenas is included. Any other service and meal are excluded. Passengers are required to stand-by for announcements concerning the flight to Antarctica. **N.B.:** If by the end of Day 5 (24:00 hours local time) ANTARCTICA XXI will not be able to transport passengers to Antarctica, ANTARCTICA XXI will refund to each passenger 15% of the total rate (excluding discounts, if any) paid for the voyage.
- DAY 6** Accommodation with breakfast in a 3-star hotel in Punta Arenas is included. Any other service and meal are excluded. Passengers are required to stand-by for announcements concerning the flight to Antarctica. **N.B.:** If by the end of Day 6 (24:00 hours local time) ANTARCTICA XXI will not be able to transport





passengers to Antarctica, ANTARCTICA XXI will refund to each passenger 100% of the total rate (excluding discounts, if any) paid for the voyage, less a fee of USD 2.000 per person.

**DAY 7** Breakfast. Transfer to Punta Arenas airport. End of the Contingency Plan.

**RETURN FLIGHT** In case of a delay on the return flight to Punta Arenas from Antarctica, passengers on board the ship will continue cruising to nearby places until the return flight to Punta Arenas is authorized. Full board and all excursions are included. No refunding for whatever reason is foreseen.

#### CONTINGENCY PLAN FOR POLAR CIRCLE AIR-CRUISES

From Day 2 to Day 8 every effort will be made to transport passengers to Antarctica taking into consideration their safety and the safety of the aircraft. In case such efforts are not successful, the daily program described hereby will apply:

**DAY 2** Guided tours to sites of historic and wildlife interest in Punta Arenas. Meals are included as well as accommodation in the same hotel as foreseen on Day 1 of the Travel Program.

**DAY 3** Guided tours to sites of historic and wildlife interest in Punta Arenas. Meals are included as well as accommodation in the same hotel as foreseen on Day 1 of the Travel Program.

**DAY 4** Accommodation with breakfast in a 3-star hotel in Punta Arenas is included. Any other service and meal are excluded. Passengers are required to stand-by for announcements concerning the flight to Antarctica.  
**N.B.:** If by the end of Day 4 (24:00 hours local time) ANTARCTICA XXI will not be able to transport passengers to Antarctica, ANTARCTICA XXI will refund to each passenger 5% of the total rate (excluding discounts, if any) paid for the voyage.

**DAY 5** Accommodation with breakfast in a 3-star hotel in Punta Arenas is included. Any other service and meal are excluded. Passengers are required to stand-by for announcements concerning the flight to Antarctica.  
**N.B.:** If by the end of Day 5 (24:00 hours local time) ANTARCTICA XXI will not be able to transport passengers to Antarctica, ANTARCTICA XXI will refund to each passenger 15% of the total rate (excluding discounts, if any) paid for the voyage.

**DAY 6** Accommodation with breakfast in a 3-star hotel in Punta Arenas is included. Any other service and meal are excluded. Passengers are required to stand-by for announcements concerning the flight to Antarctica.  
**N.B.:** If by the end of Day 6 (24:00 hours local time) ANTARCTICA XXI will not be able to transport passengers to Antarctica, ANTARCTICA XXI will refund to each passenger 25% of the total rate (excluding discounts, if any) paid for the voyage.

**DAY 7** Accommodation with breakfast in a 3-star hotel in Punta Arenas is included. Any other service and meal are excluded. Passengers are required to stand-by for announcements concerning the flight to Antarctica.  
**N.B.:** If by the end of Day 7 (24:00 hours local time) ANTARCTICA XXI will not be able to transport



passengers to Antarctica, ANTARCTICA XXI will refund to each passenger 35% of the total rate (excluding discounts, if any) paid for the voyage.

**DAY 8** Accommodation with breakfast in a 3-star hotel in Punta Arenas is included. Any other service and meal are excluded. Passengers are required to stand-by for announcements concerning the flight to Antarctica.

**N.B.:** If by the end of Day 8 (24:00 hours local time) ANTARCTICA XXI will not be able to transport passengers to Antarctica, ANTARCTICA XXI will refund to each passenger 100% of the total rate (excluding discounts, if any) paid for the voyage, less a fee of USD 2.000 per person.

**DAY 7** Breakfast. Transfer to Punta Arenas airport. End of the Contingency Plan.

**RETURN FLIGHT** In case of a delay on the return flight to Punta Arenas from Antarctica, passengers on board the ship will continue cruising to nearby places until the return flight to Punta Arenas is authorized. Full board and all excursions are included. No refunding for whatever reason is foreseen.

**IMPORTANT NOTICE ON REFUNDING** The refund amounts applicable in case of delay will be applied as indicated above and will not accumulate in case of multi-day delays. Refunding will take place as soon as possible and will release ANTARCTICA XXI from any further liability.



**ANTARCTICA XXI**  
THE FIRST AIR CRUISE TO ANTARCTICA



# USEFUL TIPS

## SUGGESTED CLOTHING

The average temperature in the Antarctic Peninsula area ranges round about 0°C (32°F), although sometimes it may get a little lower because of the chill factor caused by the wind. For this reason, it is best to wear several layers of light, warm clothing, with a windproof and waterproof jacket and pants as outside layer. The suggest clothing for Antarctica is very similar to skiing equipment.

## WATERPROOF BOOTS

As most landings in Antarctica are “wet landings”, the best footwear is knee-high waterproof boots. You will not need to carry them with you since ANTARCTICA XXI will provide you with a pair of thermal rubber boots before arriving in Antarctica.

## FACE PROTECTION

Good quality UV filtering sunglasses are essential. Glacier glasses have leather flaps at the sides to stop the light from passing through. Due to the high reflectance of UV radiation, you will also need good sun block lotion for your face (protection factor 30 and above) and lip balm.

## ON-LINE GEAR SHOP

ANTARCTICA XXI is pleased to offer to its travellers the exciting opportunity to get equipped for their Antarctic air-cruises through its on-line store, the ANTARCTICA XXI's Gear Shop. With a simple click on the “Gear Shop” button in [www.antarcticaxxi.com](http://www.antarcticaxxi.com) or directly on <http://antarcticaxxi.newheadings.com> you may enjoy browsing and shopping a unique collection of high quality apparel and gear that will help you get ready for your forthcoming polar adventure.

## PHOTOGRAPHY

To see the wildlife, you should have a good pair of lightweight binoculars (best degree of magnification 7 or 8X30). If you are passionate about photography, do not forget a good zoom lens to shoot wildlife and which avoids close approaches, and take with you a good supply of film rolls or memory sticks.

Do not forget to take with you spare batteries since cold temperatures can reduce their life span.

## AND FURTHERMORE...

Do not forger to take with you:

- Personal medications
- Backpack to carry your belongings during shore excursions.

Sunglasses with high UV protection

Cap and a scarf

Fleece jacket

Waterproof Parka

Thermal underwear

Thermal gloves

Ski pants and upper coat (waterproof)





# TERMS & CONDITIONS

ANTARCTICA XXI is in business to help people realise their Antarctic dreams and goals. ANTARCTICA XXI will endeavour and strive to do everything in its power to help make their involvement with ANTARCTICA XXI and Antarctica a positive and rewarding experience. To this end ANTARCTICA XXI strongly advises that all travellers carefully read these Terms and Conditions, as all rights and obligations between ANTARCTICA XXI and each passenger will be governed by these as herewith describe.

## Description of the program

The program that ANTARCTICA XXI is offering to the participants is described in the Travel Program corresponding to each tour.

## General booking terms

The following booking terms will apply in case of a regular booking, both for individuals and groups; in case of a charter (booking of the entire tour and vessel) specific booking terms can be negotiated and agreed upon.

- A Booking Fee shall be paid to confirm a booking made 120 days prior to the departure date or earlier.
- The total amount of the cost shall be paid no later than 120 days before the date departure.
- If a reservation is made after 120 days prior to the departure date, the total cost of the tour is due at once.
- The Participation Form duly filled by the passenger must be received by ANTARCTICA XXI no later than 120 days prior to the departure date of the tour. In case of a booking made after 120 days prior to the departure date, the Participation Form must be received immediately after the confirmation of the reservation by ANTARCTICA XXI.

Failure to comply with any of the above requirements entitles ANTARCTICA XXI to cancel the booking and withhold return of all payments received.

The payment of the Booking Fee or a deposit of any part or full payment for a reservation on this tour, and the submission of the Participation Form, shall constitute consent to all the provisions contained herein. With this, the passenger understands and accepts all provisions without restriction, including their consequences, contained in ANTARCTICA XXI's Terms and Conditions.

## Payment, cancellation and refund policies

The following payment, cancellation and refund policy will apply in case of a regular booking; in case of a charter (booking of the entire tour and vessel) specific payment, cancellation and refund terms will can be negotiated and agreed upon.

In case of cancellation of a booking, which must be done in writing by the passenger, the following terms will apply:

- Cancellation received up to 120 days prior to departure: there will be a full refund of the program cost less 75% of the Booking Fee.

- Cancellation received between 119 days and up to 90 days prior to departure: there will be a refund of 50% of the total cost of the tour (per person).

- Cancellation received between 89 days prior to departure and departure date: there will be no refund whatsoever.

ANTARCTICA XXI reserves the right to cancel a tour prior to the scheduled date of departure for any reason whatsoever. The decision to cancel a tour is within the sole and absolute discretion of ANTARCTICA XXI. In the event of such a cancellation, all monies received by ANTARCTICA XXI from the passenger or the passenger's booking agent for that tour will be refunded, including the Booking Fee mentioned in the General Booking Terms. ANTARCTICA XXI shall not be liable for any special or consequential damages, whether known or unknown, neither for any costs of air ticket, hotel or similar expenses that the passenger may have incurred in or will incur in, under any circumstances whatsoever.

ANTARCTICA XXI reserves the right (in its sole and absolute discretion) to reschedule the departure and return of any tour at any time, without prior notification and no further obligation. ANTARCTICA XXI also reserves the right (in its sole and absolute discretion) to alter or omit any part of the itinerary with due notice to the passengers wherever practicable. Such rescheduling does not constitute a cancellation by ANTARCTICA XXI. All reasonable efforts will be made by ANTARCTICA XXI to ensure that the passenger's travel objectives are met.

ANTARCTICA XXI strongly recommends all passengers to purchase a travel cancellation and interruption insurance as protection against an unforeseen event which may force them to cancel their booking before departure or leave a tour while it is in progress.

## Rates

The rates of the tour are based on tariffs and exchange rates applicable at the time of booking and are subject to change prior to departure. ANTARCTICA XXI reserves the right to modify the published rates without prior notice.

## Responsibility

ANTARCTICA XXI is not responsible for any expenses incurred by the passenger or passenger's booking agents in preparing for the voyage, including non-refundable or penalty-carrying airline tickets, special clothing, visa or passport fees or other voyage related expenses.

A tight time-schedule connection with an Antarctic voyage is unwise. For this reason, ANTARCTICA XXI strongly suggests that a flexible air ticket be held for your journey home. In no case is ANTARCTICA XXI responsible for any expense or penalty incurred by the passenger or passenger's booking agents deriving from a change in the ending date of the Travel Program.

Participants should understand that there are certain known and unknown hazards involved in Antarctic voyages, which they accept willingly and voluntarily at their own



ANTARCTICA XXI  
THE FIRST AIR CRUISE TO ANTARCTICA

# TERMS & CONDITIONS

risk at the moment of forwarding the Booking Fee. ANTARCTICA XXI will not be liable for any illness, injury or death sustained during an a tour, nor will it be liable for any uninsured loss or damage of property of any participant, whether caused in whole or in part by the negligence of the owners, directors, agents, officers, employees, contractors or subcontractors of ANTARCTICA XXI, or acting as its agents.

ANTARCTICA XXI shall not be responsible for any injury to persons (whether or not resulting in death) or damage to property arising out of any act of war, terrorism, insurrection, revolt or other civil or military uprising occurring in the countries of origin, destination or passage.

ANTARCTICA XXI acts only as agent on behalf of shipping and transport companies, airlines, hotels, and other suppliers providing services that are included in the tour, and as such ANTARCTICA XXI will exercise every possible care. However ANTARCTICA XXI, its subsidiaries and/or associated agents shall not be held responsible for property loss or damage and/or any damages resulting from illness, personal injuries or death that may be sustained by reason of, or while engaged on, any tour whether due to the ownership, maintenance, use, operation or control of any air, sea or land carrier or any other conveyance used in carrying out these tours. ANTARCTICA XXI can assume no liability due to any cause whatsoever whether caused by failure or delay or other irregularity, acts or omissions occurring during a tour under which the means of transportation or other service provided thereby is offered or supplied by owners, operators or public carriers for whom ANTARCTICA XXI acts only as agent. The Passenger Contract in use by the carriers concerned (when issued) shall constitute the sole contract between the transportation companies and the purchaser of these tours and/or passage. By accepting ANTARTICA XXI's Terms and Conditions, the passenger also accepts without reservation the provisions contained in the Passenger Contract in use by the shipping and transport companies, airlines, hotels, and other suppliers providing services that are included in the Travel Program.

ANTARCTICA XXI strongly urges participants to check with their insurance agent to make sure that they are adequately covered for all eventualities. In case of a medical problem arising during the tour, which results in costs for evacuation or repatriation, the responsibility for payment of these costs belongs solely to the passenger. ANTARCTICA XXI strongly advises that passengers ensure that such eventualities are covered by travel insurance. If not covered by travel insurance, the responsibility still remains with the passenger and ANTARCTICA XXI specifically declines any responsibility whatsoever.

ANTARCTICA XXI's staff, agents and representatives, other than an Officer of ANTARCTICA XXI, are not entitled to promise refunds for whatever reasons, and ANTARCTICA XXI will not be bound by any such oral or written promises.

## Itinerary

ANTARCTICA XXI has the duty to advise you that all operations carried out in the Antarctic territory are subject to constantly changing weather conditions and that the

safety and comfort of passengers and crew will never be put at risk by taking actions that may result in a disappointing end to a unique experience.

This is a voyage to a remote part of the world, and ANTARCTICA XXI reserves the right to change the itinerary described in the Travel Program due to weather conditions, availability of anchorages or landing sites, safety of the carrier and human lives, political conditions and other factors beyond ANTARCTICA XXI's control without consulting the participants. On any flight (to or from Antarctica), or in any sea operation, such operations will be carried out exclusively and absolutely according to the judgement of the Captain of the aircraft or the vessel, whose decision will be definite and will not be questioned by any party. It is understood that such decisions will be made in the best interests of all the passengers and with regard to the safety of the vessel and the aircraft. Participants have no right to any refund or other considerations in the event of these inevitable itinerary changes.

In case that the flight to or from Antarctica cannot take place due to unfavourable weather conditions either at point of origin and/or destination, ANTARCTICA XXI will apply the Contingency Plan corresponding to each voyage.

## Mean of conveyance, accommodation, infrastructure, and services

Keeping in mind that safety is the paramount concern, ANTARCTICA XXI will make all efforts to carry out the itinerary detailed in the Travel Program corresponding to each tour by using the means of conveyance, accommodation, infrastructure, and services foreseen to

this end. However, ANTARCTICA XXI reserves the right to use substitute means of conveyance, accommodation, infrastructure, and/or services in case of unfavourable conditions or other factors that ANTARCTICA XXI considers convenient, either at point of origin and/or transit and /or destination.

The use of substitute means of conveyance, accommodation, infrastructure, and/or services will be carried out exclusively and absolutely according to ANTARCTICA XXI's judgement. It is understood that such decision will be made with regard to ensuring the safety of air, land and sea operations, accomplishing the Travel Program foreseen for each tour, maintaining standards of service similar to the ones originally foreseen, and in the best interests of all the passengers

Participants have no right to any refund or other considerations in the event of using substitute means of conveyance, accommodation, infrastructure, and/or services.

## Admittance

These tours are intended for persons in reasonably good health. By forwarding the Booking Fee, the passenger certifies that he/she does not have any physical or mental conditions or other condition or disability that can create a hazard to he/herself or other passengers,

By submitting the Participation Form to ANTARTICA XXI, the passenger declares under



ANTARCTICA XXI  
THE FIRST AIR CRUISE TO ANTARCTICA

# TERMS & CONDITIONS

his/her sole and unique responsibility that the information contained in the form is true and complete, that he/she is fit and fully able to participate in the voyage, is able to take care of himself/herself during the voyage and will not be an obstacle for the enjoyment of the trip for all other passengers. Regardless of this, ANTARCTICA XXI reserves the right to exclude a passenger from part or all of the tour, should the passenger be considered by ANTARCTICA XXI to be not physically able or prepared to participate safely. Should a passenger's application for participation in a tour be justifiably declined by ANTARCTICA XXI prior to the scheduled date of departure of the tour, ANTARCTICA XXI will refund all payments received from the client less an administrative fee equivalent to 75% of the Booking Fee mentioned in the General Booking Terms only if the Participation Form is received by ANTARCTICA XXI at least 120 days prior to the departure date, and this will be the limit of ANTARCTICA XXI's liability. ANTARCTICA XXI shall not be liable for any special or consequential damages, whether known or unknown, under any circumstances whatsoever. ANTARCTICA XXI's decision to decline a passenger's participation in any tour shall be taken in its sole and absolute discretion.

ANTARCTICA XXI's leaders and guides will do their utmost to ensure that any problems are solved for the benefit of the group and the voyage as a whole. Passengers accept ANTARCTICA XXI's authority (whether it be a Captain, Expedition Leader, Operations Manager or Field Guide) to make decisions affecting the group or individuals.

For instance, such leader may require an individual to leave the group and/or to be excluded from (continuation of) the tour (components) if he/she believes that person's health is at risk, if an illegal act is committed, or their behaviour becomes detrimental to the safety, enjoyment or wellbeing of the group. Should an ANTARCTICA XXI leader take such action, that person would not be entitled to any refund whatsoever. If the disturbing behaviour or damage (as described above) should occur, all costs resulting from this shall be charged to the passenger.

## **Baggage allowance**

Passenger's baggage, including all his/her belongings, is under his/her sole and exclusive care and responsibility. The passenger accepts that ANTARCTICA XXI shall have no liability for loss or damage howsoever caused, even if by the negligence of the company. ANTARCTICA XXI strongly recommends to passengers to obtain insurance for all baggage and other personal property.

The passenger is not allowed to transport, not bring or have aboard any firearms, flammable, inflammable or hazardous items, controlled or prohibited substances or drugs, contraband or items prohibited by any country or port or airport to be visited, or any other item that is not admitted by the Passenger Contract of shipping and transport companies, airlines, hotels, and other suppliers providing services that are included in the tour.

On the flights to and from Antarctica, the maximum baggage allowance for each passenger, including hand luggage, is 20 kg. Baggage exceeding the maximum weight

will be refused on board the aircraft and will not be allowed even by paying an excess baggage fee. Exceeding luggage will be kept in custody by ANTARCTICA XXI and will be returned to passengers upon their return from Antarctica at the port/airport of arrival corresponding to each voyage.

## **Photography and video**

Passengers extend ANTARCTICA XXI permission to take their photograph and video during the voyage and release all rights over those images. Passengers authorize ANTARCTICA XXI to make use of such photographs and video without any restriction whatsoever, including for promotional and other purposes. Passengers who do not wish to be photographed or videotaped during the voyage must inform ANTARCTICA XXI in writing, prior to the voyage.

## **Law and jurisdiction**

This Agreement, its interpretation, and any dispute hereunder shall be governed by and construed in accordance with the laws and the jurisdiction of the Republic of Chile, with the only exception of the maritime cruise, which is ruled by specific provisions contained in the Cruise Contract. In case of any dispute, the Spanish text of ANTARCTICA XXI's Terms and Conditions is applicable.

